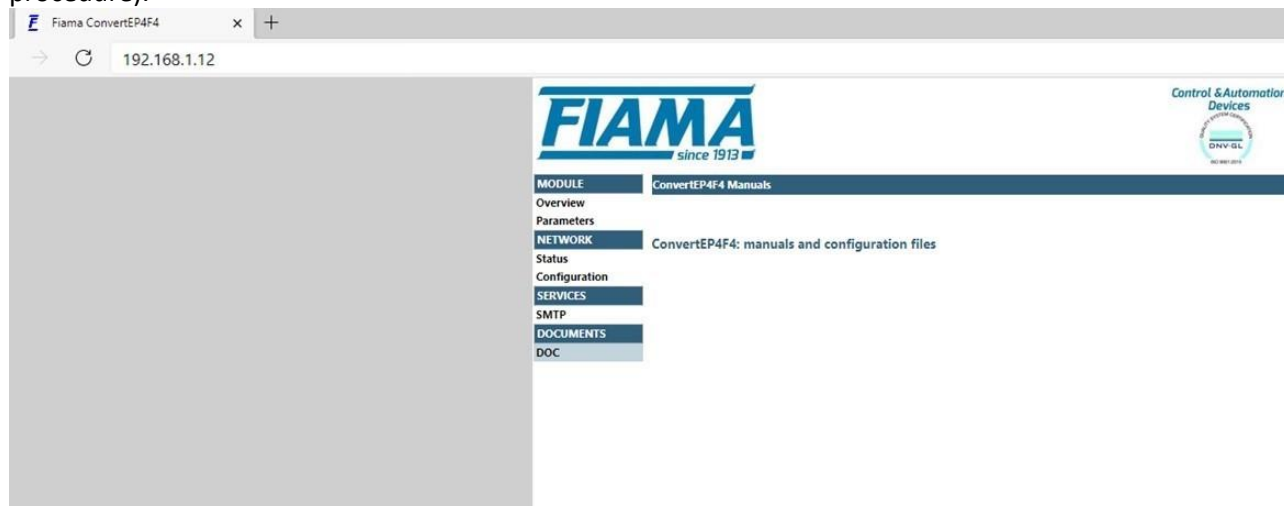


ConvertEp4F4 configuration using RSLogix5000 (Rockwell Automation)

This document specifies how to import the EDS file and the subsequent configuration of the ConvertEP4F4.

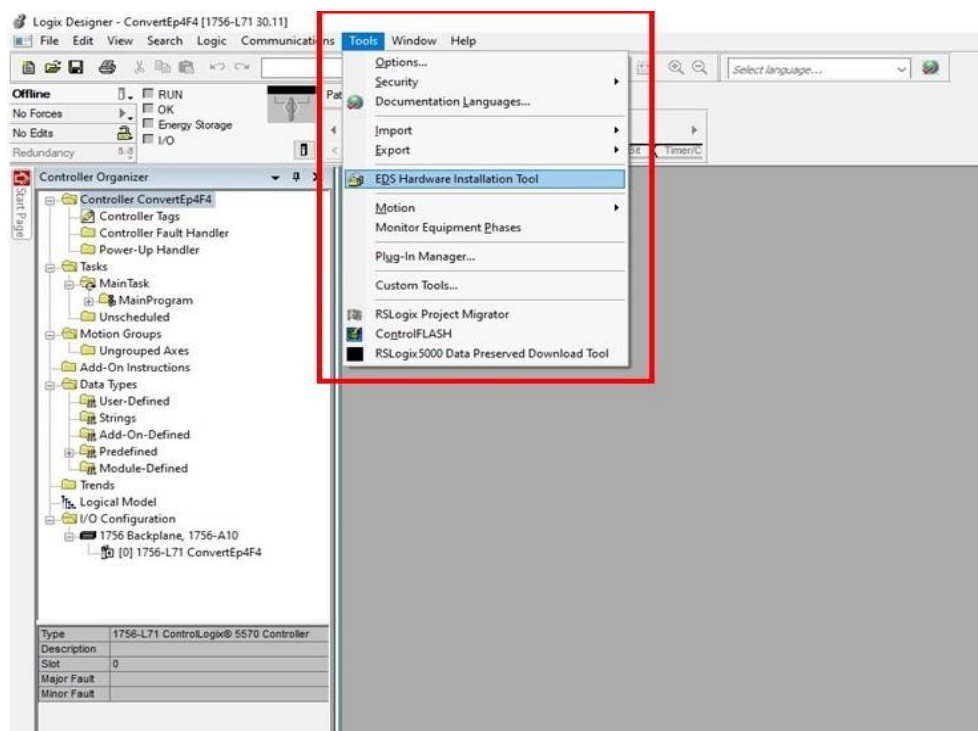
The first step is to download the configuration file directly from the web page of the instrument (to activate the web server it is necessary to assign an IP address to the device – refer to the main manual for this procedure).



Clicking the link will download a zip file which will contain all the manuals and the EDS file.

Once extracted, it will be possible to proceed with installation and configuration of the ConvertEP4F4.

Subsequently it will be possible to install the configuration file from the “EDS Hardware installation tool” of the “Rockwell RSLogix5000” software.





Welcome to Rockwell Automation's EDS Wizard

The EDS Wizard allows you to:

- register EDS-based devices.
- unregister a device.
- change the graphic images associated with a device.
- create an EDS file from an unknown device.
- upload EDS file(s) stored in a device.

To continue click Next

Avanti >

Annulla

Options

What task do you want to complete?



- ☒ Register an EDS file(s).
This option will add a device(s) to our database.



- ☐ Unregister a device.
This option will remove a device that has been registered by an EDS file from our database.



- ☐ Create an EDS file.
This option creates a new EDS file that allows our software to recognize your device.

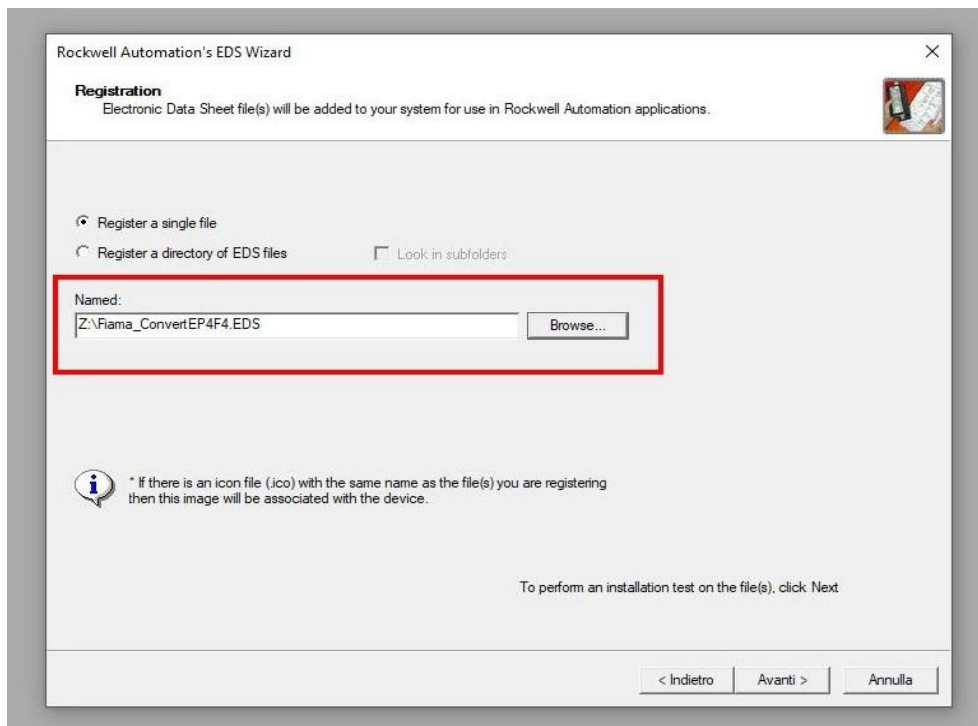


- ☐ Upload EDS file(s) from the device.
This option uploads and registers the EDS file(s) stored in the device.

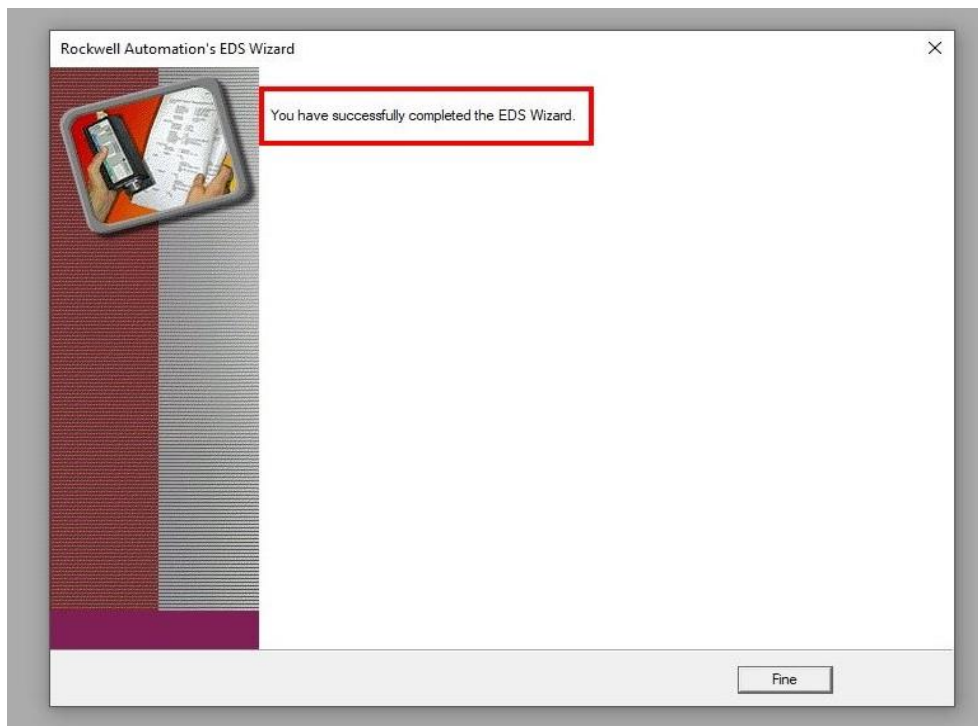
< Indietro

Avanti >

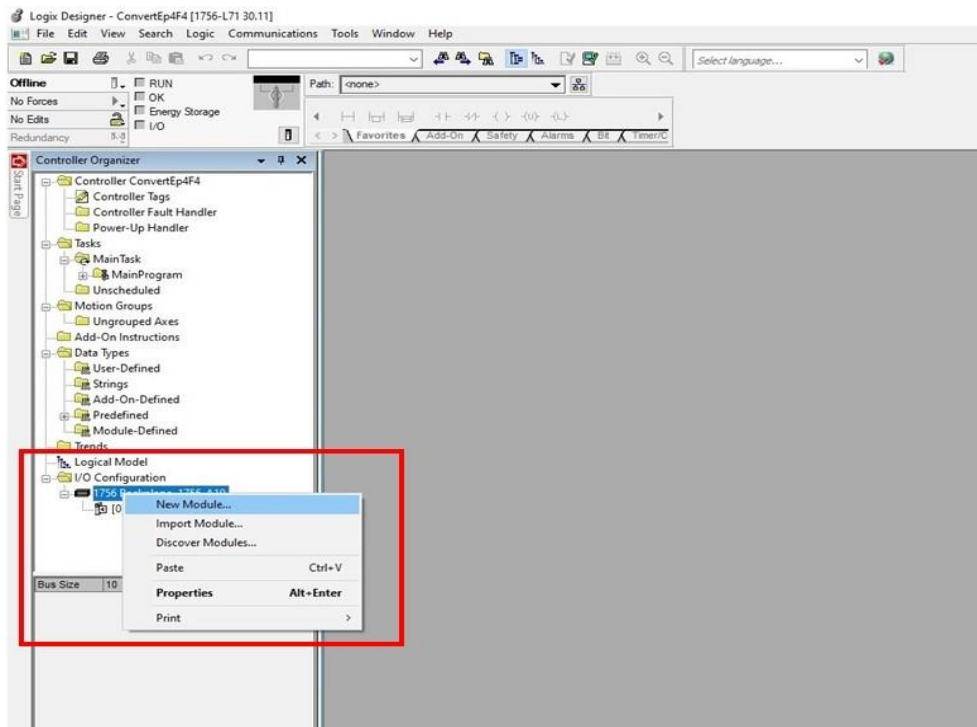
Annulla



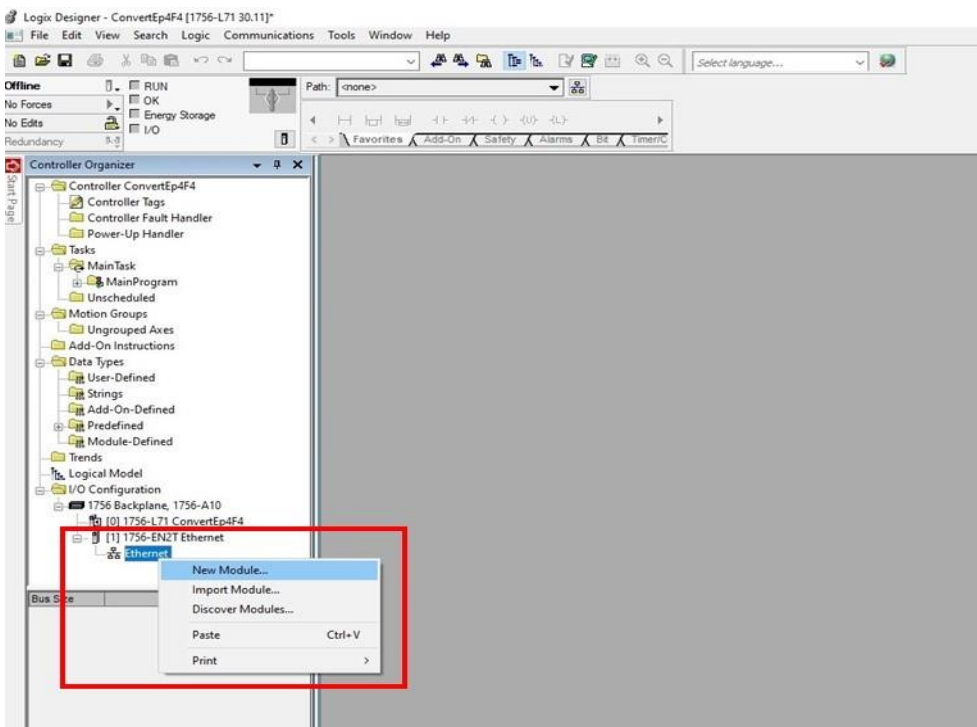
In this menu, click on the browse button and select the Fama ConvertEP4F4 EDS file.

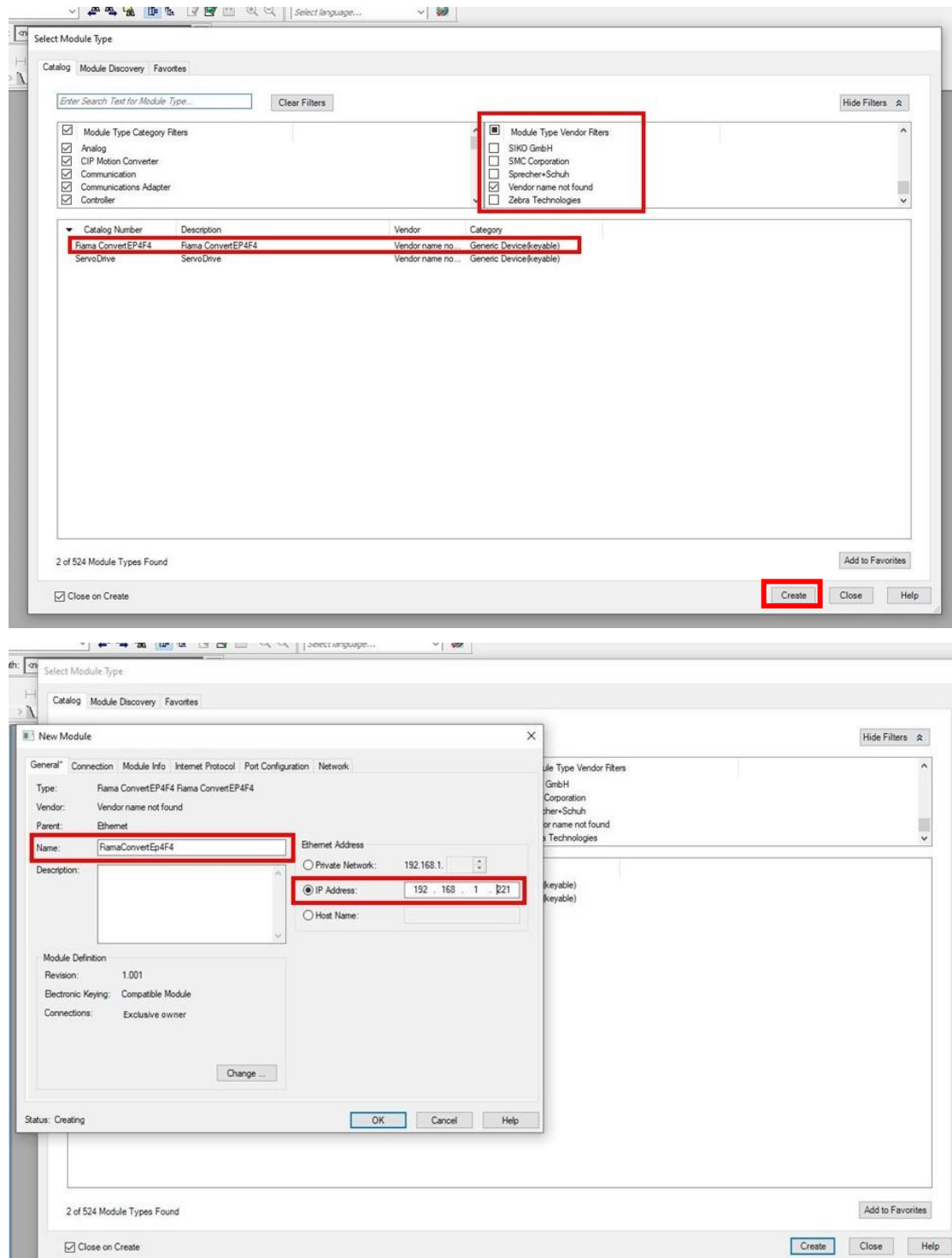


After successful installation, press the "Close" button and after waiting for the catalogue update, the ConvertEP4F4 device will be available to be added and used within the project.

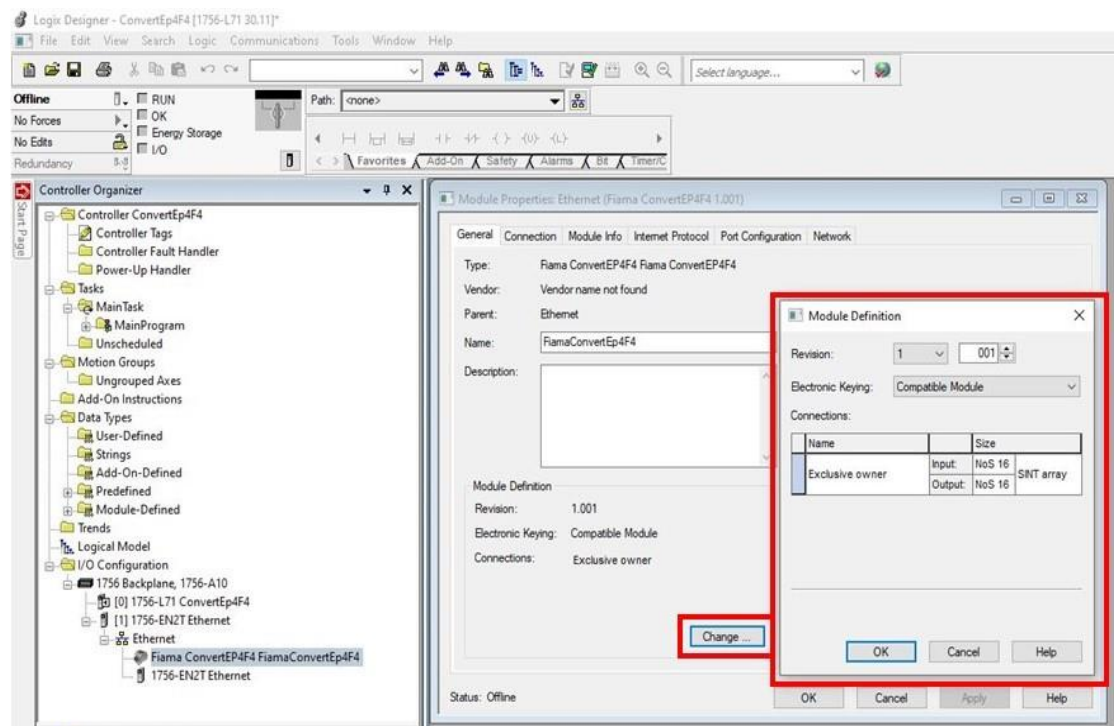


In the main view, using “I/O configuration” from the menu on the left, it will be possible to add the ConvertEP4F4 module to the RSLogix5000 project.

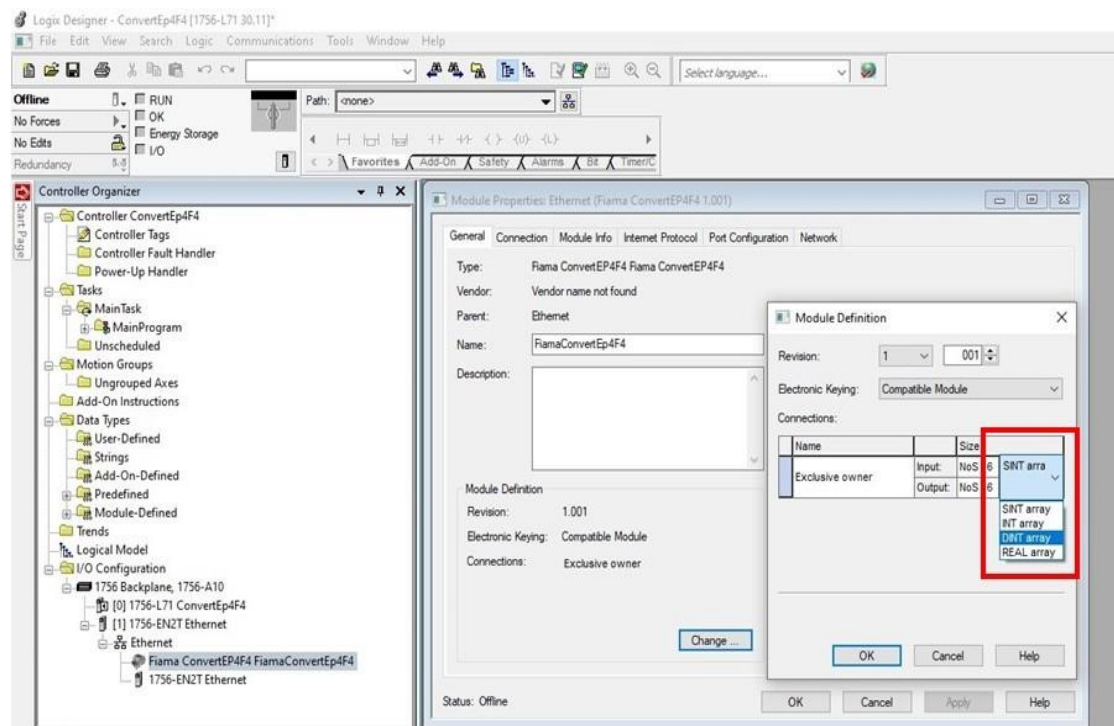




The device configuration menu will appear after clicking on the “create button”. In this menu it is possible to assign the name and the IP address of the ConvertEP4F4 module.

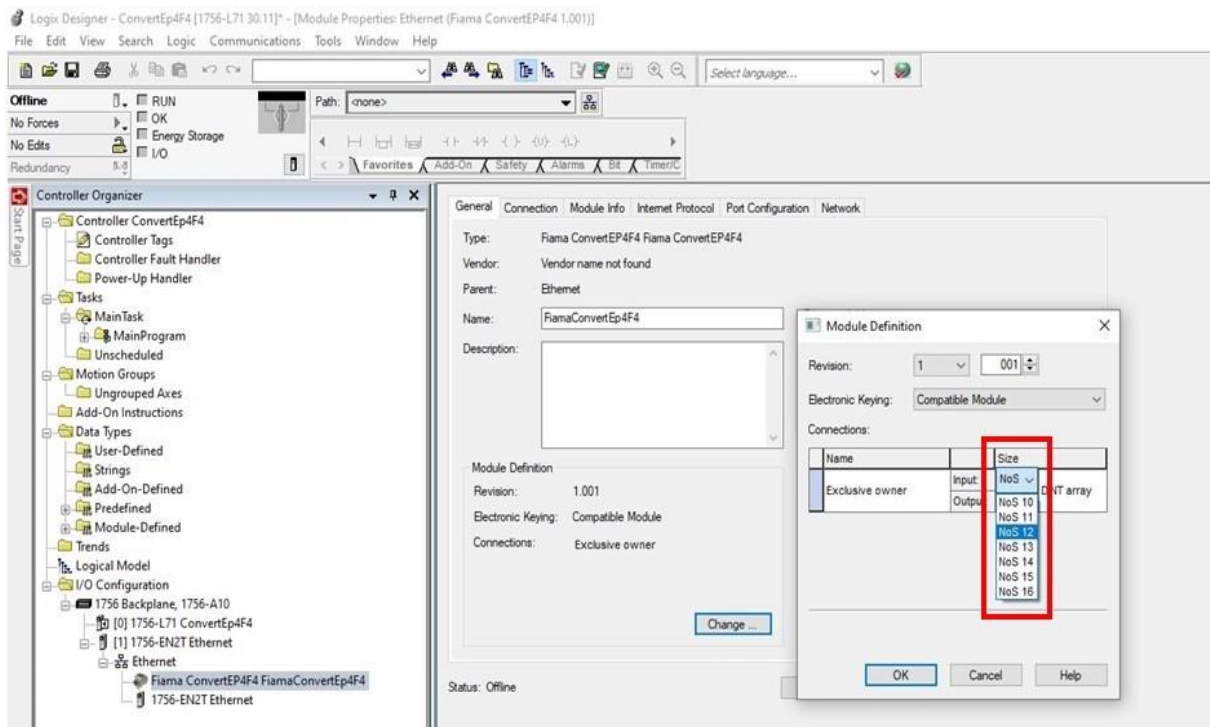


Once the device has been added, it is necessary to configure the I/O. This operation can be performed in the “Module properties menu”, clicking on the “Change” button.

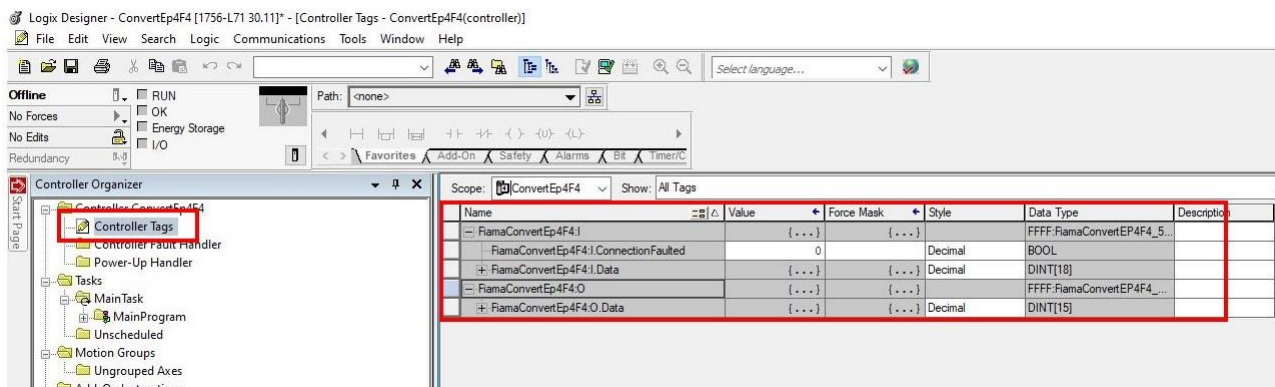


The datatype must be set to DINT.

The number of sensor “Nos” must be set according to the device configuration.



NB: after clicking “OK” button in the module definition menu, it is mandatory to click “Apply” in the configuration window.



The configuration will appear in the “ControllerTags” menu.

Note: it is mandatory to match the device configuration which is done using the web server and the configuration done using RSLogix5000. For example, in case the ConvertEP4F4 is configured through the web server to manage 10 devices, then in the PLC project it must be set Nos 10 in the input and output module definition.